

Bethel United Church

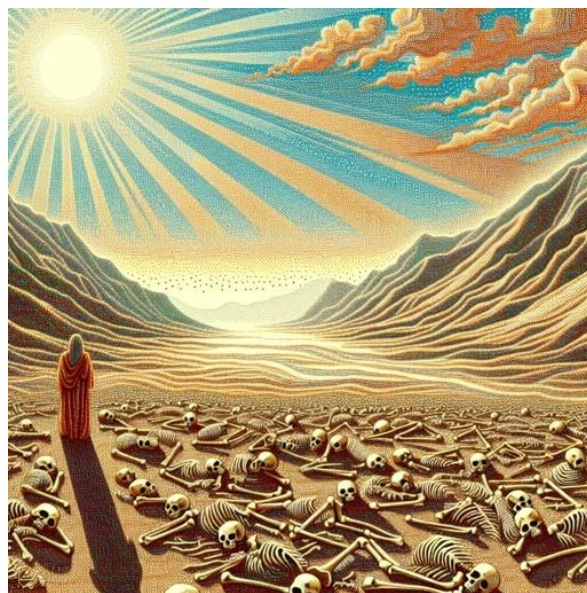


2025 Annual Report

Rev. Lynne Gardiner
Pastor

Rev. Arlyce Schiebout
Voluntary Associate Minister (VAM)

Then he asked me, "Son of man, can these bones become living people again?" "O Sovereign LORD," I replied, "you alone know the answer to that." (Ezekiel 37: 3)



1500 Rideau Ferry Rd.
Rideau Ferry, ON

Rideau Ferry Bethel Pastoral Charge

Bethel United Church

Annual Report 2025

Table of Contents

Our Mission, Our Goals	3
Minister’s Message	4
Congregational Life	5
Committees	
Ministry and Personnel	6
Stewardship	7, 8
Property	9
Trustees	8
Choir.....	9
United Church Women.....	10
UCW Financial Report.....	11, 12
Eastern Ontario Outaouais Regional Council	13, 14
Financial Reports	
Bethel United Church Financials 2025.....	16, 17
Bethel United Church Budget 2026	18
Bethel United Church Chronology.....	19-23
Minutes – Annual Meeting of April 13 2025	Appendix 1

OUR MISSION

To be an active Christian presence in our community

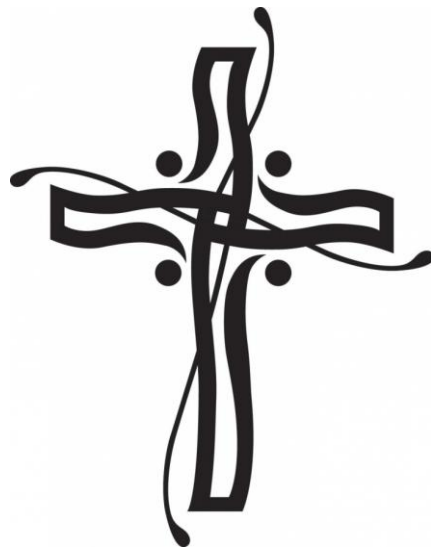
OUR GOALS

We will work together for the benefit of the church and for the benefit of the Rideau Ferry Bethel Pastoral Charge

We will maintain and promote our Christian presence by rejoicing, renewing, responding, and reaching out to our members and adherents and to the community

We will investigate ways to work within our community to improve people's lives by:

- † identifying existing organisations with outreach programs and determining how we can help
- † raising awareness through the bulletin, newsletters, and social media
- † staying in touch with people using traditional methods and technology





Minister's Reflection

Then he asked me, "Son of man, can these bones become living people again?" "O Sovereign LORD," I replied, "you alone know the answer to that." (Ezekiel 37:3)

This past year has been one of deep reflection across the whole of the United Church of Canada. Many of us have spent time reading and discussing the Towards 2035 documents, which present sobering data about the future of our denomination. The projections suggest that within ten years there may be only about 8,000 members across the country. Statistics like these are difficult to hear. They challenge long-held assumptions about what church looks like and how it functions. For many people, they evoke strong feelings—grief, loss, anxiety, and even discouragement.

These feelings are understandable. For generations we have known the church as a place where people gather regularly, where communities are large and vibrant, and where the rhythms of congregational life feel stable and familiar. Today, those patterns are changing rapidly. Congregations across the country are asking hard questions about sustainability, resources, and identity. Many of us feel the weight of wondering whether we have the energy, the numbers, or the financial resources to continue the ministries that have shaped our lives for so long.

In moments like these, the vision given to the prophet Ezekiel feels especially meaningful. Standing in the valley of dry bones, Ezekiel confronts a scene that seems beyond hope. Everything appears lifeless and finished. Yet God asks a surprising question: "Can these bones live?" It is a question not about statistics or projections, but about possibility. Ezekiel's answer—"O Sovereign LORD, you alone know"—is both humble and faithful. It acknowledges that while we may not see the path forward clearly, God's creative power is not limited by what appears impossible to us.

Here at Bethel, we continue to hold onto that same hope. While the broader trends around us may point toward decline, our community continues to proclaim that decline and closure are not the end of our story. Instead, our story is one of resilience, faithfulness, and openness to what God may yet be doing among us.

Over the past year we have continued to explore new choices and new ways of being community together. We have asked what it means to be church in this place and at this time. We have sought to remain attentive to the needs of our neighbours and responsive to the opportunities for connection, compassion, and service that arise around us.

Most importantly, Bethel continues to be a place of welcome. People are invited into community here, and when they arrive they are embraced by the care, friendship, and support that flow from shared life together. Whether through worship, fellowship, outreach, or quiet acts of kindness, this congregation continues to embody the love of Christ in tangible ways.

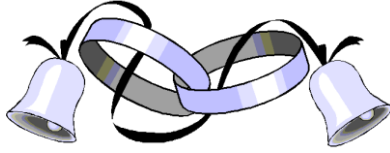
The story of Bethel is not simply about survival. It is about trust—trust that God is still at work, even in seasons of uncertainty. Just as in Ezekiel's vision, we believe that God continues to breathe new life into old bones, renewing hope where it seemed lost and creating possibilities where none seemed to exist.

And so we continue to listen, to serve, and to trust.

And live.

Blessings,
Reverend Lynne

CONGREGATIONAL LIFE



MARRIAGES: *none*



BAPTISMS: *none*



NEW MEMBERS

Suzanne Duquette-Stanton
Barbara Hunt
Brian Perkin

Emily Gardiner
Paul Kehoe



DEATHS/BURIALS/MEMORIALS

Wilma Winton
Helene Chapman

January 2025
April 2025

Ministry and Personnel Committee



October 1st 2025, Reverend Lynne celebrated her sixth anniversary with Bethel and we continue to thrive under her strong leadership. During this time, we were also extremely fortunate to have Reverend David Steele and Reverend Arlyce Schiebout support our community of faith during Reverend Lynne's medical leave. With the guidance of all these dedicated leaders, Bethel remains a strong, vital community.

The M&P Committee provides a consultative and supportive role for all pastoral charge staff. An invitation is sent out to all the Bethel employees to attend these meetings to discuss any concerns, share information, and/or ask questions. Bethel very much appreciates the hard work, dedication and commitment of the entire Bethel family.

M&P meetings were held on April 14th, September 15th and December 1st. The general focus of these meetings continues to be: Work of Bethel, Pastoral Care, Study Leave/Vacation, Work of the Region and Wider Church Responsibilities, Wellness and Rev Lynne's Doctoral Program. Motions needed for the Board were submitted as required.

Submitted by

Brenda Gray

Bob Klatt

Jennifer Miller

Kathleen Williamson.



Stewardship Committee

Members of the Stewardship Committee in 2025 included Ashley Walker, Sandra Walker, Sue Miller, Calvin Miller, Ruth Anne Johnson, Paul Coutts, Sandy Lackey, Barb Joynt, Murray and Karen Hunt.

Activities of the Stewardship Committee in 2025 included:

- Organizing the Minute for Mission story readers list which provides readers for each Sunday Service and connects the readers with the Minute for Mission story provided by Mission and Service of the United Church of Canada.
- The Stewardship Committee partnered once again with the UCW on a Lenten Project. The focus of the **2025 Lenten Project** was to raise awareness about the work of the PSFDH Hospital Foundation and provide support to the PSFDH Foundation's current Appeal to raise money for the purchase of a new cataract microscope (\$937.00 was raised for the Lenten project).
- **The Bethel Annual Pancake Breakfast** took place on **Saturday April 5, 2025**. We served 130 breakfasts and earned about \$1929.00 There was lots of good camaraderie, laughter and goodwill as members of the Bethel Family and visitors from the broader community connected and shared. We were fortunate to again partner with Oliver's Maple Works for this event. Special thanks to the large number of Bethel family folk who helped to carry out this event.
- **The Fashion Café held on May 3, 2025** was a great fun outreach event, well attended, with lots of really interesting accessories very well organized by Ashley and Sandra Walker. The hall looked terrific thanks to Sandy Lackey and her decorating crew, the hospitality team kept the tea/coffee and delicious cookies coming throughout the afternoon. On top of it all we raised \$475.00 to add to church funds.
- Stewardship organized a picnic BBQ lunch for the **Annual Bethel Outdoor Service and Picnic** at the Rideau Ferry Yacht Club Conservation Area on **Sunday, July 28th**. RVCA generously provided parking passes at a reduced price. Expenses were covered by donations. Once again this event was much enjoyed by all. Even though it was a very hot day, there were 33 attendees.
- During the **October Stewardship Campaign**, our generous Bethel Family donated \$1520.00 to support the Community Housing Initiative in Perth (CHIP) Program and their work to provide additional affordable housing in Perth. **CHIP donations** were gratefully received as loose change/undesigned funds during the offering time on all October Sundays.

- **Fall Newsletter** – The Fall Newsletter was distributed very early in November (copies delivered by hand in church and also available through email) providing members of the Bethel Family clear and timely information about Advent and Christmas services and activities.
- **White Gift Sunday** – November 30th. Monetary donations were collected in White Envelopes for the Perth and Smiths Falls Food Banks (The Table Community Food Centre in Perth and the Smiths Falls Community Food Bank in Smiths Falls).
Christmas Memory Balls. This was a new and special activity for Bethel this year suggested by Vicki Hough who looked after the entire project providing the balls and collecting the memorial requests and donations.
 The total amount of money collected for the Perth and Smiths Falls Food Banks through the White Gift Envelopes and the Memory Ball project was \$1401.45. We do have a caring and generous Bethel family.
- **Christmas Sing-Along**- The Christmas Sing-Along took place after church on Sunday, December 14th following a Soup and Sandwich Lunch organized by the UCW. We were thankful for Ruth Anne providing the music and the Choir and Aidan for leading the singing. This activity was much enjoyed and appreciated by everyone.

The Stewardship Committee appreciates the ongoing support of the Bethel congregation for all our activities throughout the year.

Respectfully submitted,
Karen Hunt

* * * * *

Trustees



1. In September 2025 the sum of \$10,000.00 was transferred to the operating account to support the operation of Bethel.
2. The Trustee Account now has \$26,000.00 available.
3. There is a total of \$225,000.00 on deposit with EOORC. This was originally \$200,000.00 when the account was established in September 2021

Submitted by
J R Johnson



Property Committee

Members of the committee are Paul Coutts, Bob Klatt, Barb Joynt (UCW representative), Janis de Salvo, Calvin Miller, Vicki McClatchie

Items addressed in 2025:

- ❖ Front stone steps and other masonry repairs.
- ❖ Water filtration system reset.
- ❖ Holding tank monitored and pumped when necessary
- ❖ Heat pump serviced and cleaned.
- ❖ Snow removal and sanding as necessary by Howard Burns Equipment.
- ❖ Grass cutting and grounds maintenance by David Coutts.
- ❖ Water testing in care of Janis Desalvo.

Projects for spring:

- ❖ complete accessible door trim.
- ❖ redo ramp to accessible door.

Respectfully submitted,
Paul Coutts / Bob Klatt
Co-chairs

* * * * *

Choir

Our choir members continue to lead worship each week. At the anniversary service we celebrated the retirement of Carol Husband featuring a reunion with some of the Mellowdears. We welcome Paula Grenke to our music team. We appreciate Reverend Lynn's vocal support. We are also thankful for guest appearances by Emily Gardiner.

Heather Thompson, Barbara Joynt, Jan Gardiner, Christine McColl, Lorne Gardiner, John Gray, Jim Hamon, Hugh Gardiner.

Submitted by,
Ruth Anne Johnson



United Church Women



We continued with tradition and began 2025 with a potluck lunch following the first meeting of the New Year. Gathering in fellowship brings joy to everyone.

Another tradition at Bethel is Soup and Sandwich lunches which were held on the following Sundays: February 2nd, March 10th, April 13th (before the Annual Congregational Meeting), September 28th, October 26th, and December 14th (before the Christmas sing-along).

On Saturday, May 3rd, we provided tea/coffee and sweets in partnership with the Stewardship committee's Fashion Café, an afternoon to drop in and shop for fashion accessories.

On May 6th we hosted UCW members from Trinity United Church for a tea and a time of fun and fellowship.

On Sunday, May 11th we honoured three (3) UCW members, Anne Dowie, Thelma Munro, and Linda Hamon, with a UCW Life Membership.

Our summer bake sale on June 28th was again a very successful event thanks to all the donations of delicious baked goods.

We were able to have our annual Cookie Order/Christmas Bake Sale on December 6th and were very successful. The UCW ladies and many others from the congregation provided pies, cakes, and other baked goods. Savoury items such as baked beans and meatballs also sell very well. We continue to sell household related items such as dish cloths, "scrubbies", potholders, and kitchen towels as these also sell well.

Bethel UCW members attended both the Four Rivers Area annual meeting and fall rally.

We struggled, this year, to maintain our financial commitment to Bethel UC and also to maintain our financial support of local community organisations. Without the help of the congregation we wouldn't be able to continue our community outreach. We are grateful to all who contributed to, and supported our fundraising efforts.

Respectfully submitted,
Linda Hamon

Bethel UCW Financial Report

(1/2)

			Bethel U.C.W. Financial Report	
			2025	2024
General Account				
Receipts				
Sales			\$8,301.60	\$10,755.30
Offering			457.00	269.00
Donations			220.00	27.30
Birthday Box			27.00	52.00
Total			\$9,005.60	\$11,103.60
Expenditures				
Donations			\$3,250.00	\$11,300.00
Dues			316.00	317.00
Supplies			385.54	0.00
Petty Cash			200.00	350.00
Misc.			290.04	388.99
Total			\$4,441.58	\$12,355.99
Net excess of receipts over expenditures (expenditures over receipts)			\$4,564.02	(\$1,252.39)
Balance - opening			\$3,285.26	\$4,537.65
Balance - closing			\$7,849.28	\$3,285.26
<i>Submitted by: Kathleen Williamson</i>				
<i>Reviewed by: Fred Bradley</i>				

Bethel UCW Financial Report

(2/2)

Petty Cash & Donations Report

			Bethel U.C.W. Financial Report	
			2025	2024
Petty Cash Account				
Receipts				
Transfers from General Account			\$200.00	\$350.00
Total			\$200.00	\$350.00
Expenditures				
Catering and Supplies			172.70	\$283.95
Total			\$172.70	\$283.95
Net excess of receipts over expenditures			\$27.30	\$66.05
Balance - opening			74.35	8.30
Balance - closing			\$101.65	\$74.35
<i>Submitted by: Kathleen Williamson</i>				
<i>Reviewed by: Fred Bradley</i>				

			Bethel U.C.W. Donations Report	
			2025	2024
Bethel United Church			\$0.00	\$10,000.00
Mission and service			500.00	0.00
Hospice Palliative Care			200.00	500.00
Perth and district food bank			500.00	0.00
Smiths Falls community food bank			500.00	0.00
Interval house			600.00	300.00
Perth Smiths Falls Community Hospital			0.00	500.00
Rideau Hill Camp			100.00	0.00
Snow suit fund			200.00	0.00
Myeloma Canada			50.00	0.00
Kid's help line			200.00	0.00
Four Rivers UCW			50.00	0.00
Cornerstone Landing Youth Services			200.00	0.00
Emily Garner			100.00	0.00
Terry Fox Foundation			50.00	0.00
Total			\$3,250.00	\$11,300.00

EOORC in 2025

Highlights from 2025

- We celebrated the 100th anniversary of The United Church of Canada. EOORC hosted a large worship service on June 15th, with 1500 people attending and many more joining virtually. It was a wonderful experience to gather together for this inspiring worship service. Many congregations also hosted their own 100th anniversary celebrations.
- Communities of faith throughout EOORC sent quilt squares to create the 100th anniversary quilt. It was quilted by the quilting group at St. John's United Church in Kemptville, and was displayed at the June 15th celebration before touring our regional council.
- Five congregations in EOORC participated in the "100 Tables" project, celebrating the 100th Anniversary by transforming a picnic table into a place of welcome and connection.
- We were one of the first regional councils to engage with the "Towards 2035" data. It was presented at the AGM. In the autumn, EOORC organized two full-day workshops called "Holding a Vision for the Future," bringing together ministers and congregational leaders to discuss our future as The United Church of Canada.
- The Executive has appointed a sub group of the Executive called the Vision Keepers. This is a six person body that is holding the work of the Towards 2035 Report.
- The Keeping in Touch Team was created and began their work. Each member has a list of churches whom they call or email on a regular basis.
- With funding from Canada Summer Jobs and the Scrivens-Baillie Fund, we hired a Communications Associate student, Loli Zahinda, over the summer months. She worked on the 100th Anniversary, AGM and directory among other projects.
- The Ministry Personnel Leadership Support Team hosted two gatherings for ministry personnel: "Ministry Leadership in a Crisis Shaped World" and a learning event about MAID (medical assistance in dying).
- EOORC offered workshops for members of M&P committees.
- Many congregations in EOORC fundraised for the Dream Lebreton Capital Campaign with Multifaith Housing Ottawa.
- EOORC had a float in the Capital Pride Parade, and congregations throughout EOORC participated in many local pride events. (Did you know we have a United Church banner which can be used in marches or pride parades? Please contact nmatkovsky@united-church.ca).
- A Celebration of Ministries service was held on September 19th at Southminster United Church. The Rev. Dr. Frank Emanuel was ordained at this service.
- Rev. Whit Strong retired from his role as Pastoral Relations Minister. Rev. Victoria Andrews began her work as EOORC's new Pastoral Relations Minister.
- There are several new ministries, including the God's Beloved community (a new ministry at Kitchissippi United Church, Ottawa) and church plants (including at Knox-St. Paul's United Church in Cornwall and Riverside United Church in Ottawa).
- The Regional Council's 2024-2025 strategic plan has now come to a close. Most pieces of the plan were completed, but some elements did not meet the goals set for them, often for lack of volunteer enthusiasm. A new plan will be developed in the coming months to help integrate the Towards 2035 vision and objectives and to attempt a greater degree of focus.

Eastern Ontario Outaouais Regional Council

2/2

For more information about the EOORC Executive and Leadership Teams, and for minutes of the Executive Meetings visit the EOORC website.

Below are short descriptions of the three meetings held throughout the year:

Creative Sparks

Winter Gathering – March 1, 2025 (online via Zoom)

A half-day informational and educational meeting.

This gathering shared inspirational stories and ideas from across our regional council. A number of presenters shared on innovative ideas with topics spanning from seniors grants to pie-making to Sunday school curricula to revitalizing AGMs...and more! We had the opportunity to learn from the real-life experience of others in our regional council.

EOORC Annual Meeting: A New Heaven and a New Earth – Towards 2035

June 14, 2025, EY Centre, Ottawa (with option to attend via Zoom)

At our AGM, we heard a presentation about “Towards 2035,” a statistical report which takes United Church statistics from 1992 to 2023 and projects estimates to 2035. We considered what we could do to help create space for healthy communities of faith. We attended to business, heard reports and gathered for worship. There was a roundtable about First Thirds ministry. This AGM was only one day, as the 100th anniversary celebration was the next day.

EOORC Fall Gatherings – Connections Day

November 1, 2025, Across EOORC

Instead of a fall meeting, we planned five gatherings on the same day and at the same time, but in locations across the region. During the region’s strategic planning process, it was decided that we should transform our fall meetings so that they reach more people, closer to home, to build connections and relationships with the wider church. Four of the gatherings went ahead (one was cancelled due to low attendance) and were a helpful opportunity for folks to get to know their neighbours. The evaluations were generally positive, and we will consider whether to do this again in 2026.

Rideau Ferry Bethel Pastoral Charge – 2025



The following reports are included:

Bethel United Church Financial Report for 2025

Bethel United Church Budget proposed for 2026

Bethel United Church Financial Report – 2025

1/2

Receipts

Bethel United Church				
As at December 31, 2025				
		Operating	Stewardship	
Balance January 1, 2025		\$23,075.83	\$552.90	\$23,628.73
Receipts				
	Local Support	45,076.97		
	Local Support - Par	41,910.00		
	Loose Collection	836.00		
	Memorial Funds	275.00		
	Mission and Services	8,479.00		
	Camp Lauren	295.00		
	GST Rebate	1,736.94		
	Stewardship - Lenten Appeal		937.00	
	Stewardship - Fashion Café		475.00	
	Stewardship - Pancake Breakfast		1,929.00	
	Stewardship - Picnic		305.00	
	Stewardship - CHIP Project		1,520.00	
	Stewardship - White Gift		1,401.45	
	Stewardship - Transfer	2,000.00		
	Stove Project	254.00		
	Trustees	10,000.00		
	United Church - Salary Rebate	10,873.95		
	Total Receipts	121,736.86	6,567.45	128,304.31

Bethel United Church Financial Report – 2025

2/2

Disbursements

Bethel United Church				
As at December 31, 2025				
		Operating	Stewardship	
Balance January 1, 2025		\$23,075.83	\$552.90	\$23,628.73
Disbursements				
	Salary/Benefits	91,743.44		
	Supply Minister	4,680.00		
	Continuing Education	1,689.22		
	Pulpit Supply	1,216.00		
	Travel	448.57		
	Organist	1,230.00		
	Bank Charges/Par Cost	307.57		
	Gifts	550.00		
	Internet/Web	3,162.51		
	Music Licence/Piano	698.50		
	Office - Secretary	164.76		
	Office - Treasurer	140.12		
	Photocopier Expenses	368.82		
	Photocopier Lease	714.47		
	Regional Dues	4,041.00		
	Telephone	148.19		
	Church - Cleaning	1,560.00		
	Church - Hydro	3,135.50		
	Church - Insurance	3,502.15		
	Church - R&M	2,225.34		
	Church - Snow	5,354.88		
	Church - Septic/Water	553.20		
	Camp Lauren	295.00		
	Mission and Services	8,479.00		
	Stewardship - Lenten Appeal		937.00	
	Stewardship - Expenses		895.37	
	Stewardship - CHIP Program		1,520.00	
	Stewardship - Transfer		2,000.00	
	Stewardship - White Gift		1401.45	
	Stove Project	254.00		
	Treasurer Honorarium	500.00		
	Total Disbursements	137,162.24	6,753.82	143,916.06
Balance		\$7,650.45	\$366.53	\$8,016.98

Bethel United Church Budget proposed for 2026

Budget Bethel Pastoral Charge: Rideau Ferry			
	Budget	Actual	Budget
	2025	Dec 31/25	2026
Expenses			
Salary/Benefits	90,687	91,743	92,160
Supply Minister	2,800	4,680	6,240
Con. Ed./Book Allowance	1,689	1,689	1,738
Travel	875	449	500
Gifts	700	550	700
Lay Training Fund	3,000	0	0
Organist	0	1,230	1,800
Pulpit Supply	1,525	1,216	1,566
Music License/Piano	350	699	700
Treasurer Hon.	500	500	500
Internet/Zoom/Donation/Website	2,958	3,163	3,350
Regional AGM	500	0	500
Regional Dues	4,350	4,041	4,950
Office (Minister)	100	0	100
Office (Secretary)	200	165	200
Office (Treasurer)	200	140	200
Telephone	235	148	192
Par Cost/Bank Charges	360	308	325
Photocopier Expenses	350	369	500
Photocopier Lease	720	714	720
Church - Cleaning	1,560	1,560	1,560
Church - Grass/Snow	2,000	5,355	5,500
Church - Hydro	3,000	3,136	3,200
Church - Insurance	3,400	3,502	3,700
Church - Maintenance	500	2,225	1,000
Church - Water/Septic	1,015	553	800
Miscellaneous	26		24
TOTAL	123,600	128,134	132,725

2025 CHRONOLOGY
Life and Work of Bethel United Church

January

January 7 UCW meeting followed by a potluck lunch
January 12 Rev. Lynne Gardiner away; Emily Gardiner leads worship
January 18 Zoom Prayer & Share
January 19 Rev. Lynne Gardiner away; members of Session lead worship
January 23 Zoom Prayer & Share
January 26 Rev. Lynne Gardiner away; sing-along of old time hymns

February

February 2 Rev. Lynne Gardiner away; Rev. Dave Steele leads worship;
soup & sandwich lunch
February 4 UCW meeting; Chat & Chew
February 6 Zoom Prayer & Share
February 9 Rev. Lynne Gardiner away; Rev. Dave Steele leads worship;
Stewardship committee meeting
February 11 Chat & Chew
February 13 Zoom Prayer & Share
February 16 Rev. Lynne Gardiner away; Rev. Dave Steele leads worship
February 18 Chat & Chew
February 20 Zoom Prayer & Share
February 23 Rev. Lynne Gardiner away; Rev. Dave Steele leads worship
February 25 Chat & Chew
February 27 Zoom Prayer & Share

March

March 2 Rev. Lynne Gardiner away; Rev. Dave Steele leads worship
March 4 UCW meeting; Chat & Chew
March 6 Zoom Prayer & Share
March 7 Bethel hosts the annual World Day of Prayer service
March 9 Rev. Lynne Gardiner away; Rev. Dave Steele leads worship;
Lent 1; communion; soup & sandwich lunch
Lenten project begins (PSFDH cataract microscope)
March 11 Chat & Chew
March 13 Zoom Prayer & Share
March 16 Rev. Lynne Gardiner away; Rev. Dave Steele leads worship;
Lent 2;
March 18 Chat & Chew
March 20 Zoom Prayer & Share

March 23 Rev. Lynne Gardiner away; Rev. Dave Steele leads worship;
Lent 3;
March 25 Chat & Chew
March 27 Zoom Prayer & Share
March 30 Rev. Lynne Gardiner away; Rev. Dave Steele leads worship;
Lent 4;

April

April 1 UCW meeting; Chat & Chew
April 3 Zoom Prayer & Share
April 5 Stewardship pancake breakfast
April 6 Rev. Lynne Gardiner away; Rev. Dave Steele leads worship;
Lent 5;
April 8 Chat & Chew
April 10 Zoom Prayer & Share
April 13 Rev. Lynne Gardiner; Palm Sunday; soup & sandwich lunch;
Annual Congregational meeting
April 14 M & P meeting
April 15 Chat & Chew
April 17 Zoom Prayer & Share
April 18 Good Friday worship; potluck supper
April 20 Rev. Lynne Gardiner; Easter Sunday
April 22 Chat & Chew
April 25 Zoom Prayer & Share
April 27 Rev. Lynne Gardiner
April 29 Chat & Chew

May

May 1 Zoom Prayer & Share
May 3 Fashion Café
May 4 Rev. Lynne Gardiner
May 6 UCW meeting; lunch with Trinity UCW; Chat & Chew
May 8 Zoom Prayer & Share
May 11 Rev. Lynne Gardiner; UCW worship celebrating 100th anniversary
of UCC; presentation of UCW Life Memberships
May 13 Chat & Chew
May 15 Zoom Prayer & Share
May 18 Rev. Lynne Gardiner
May 20 Chat & Chew
May 22 Zoom Prayer & Share
May 25 Rev. Lynne Gardiner; OB meeting

May 27 Chat & Chew
May 29 Zoom Prayer & Share

June

June 1 UCC 100th Anniversary worship at Trinity U. C.
June 3 Chat & Chew
June 5 Zoom Prayer & Share
June 8 Rev. Lynne Gardiner
June 10 UCW meeting; Chat & Chew
June 12 Zoom Prayer & Share
June 15 Rev. Lynne Gardiner; Zoom airing of EOORC Gathering for UCC
100th Anniversary
June 22 Rev. Lynne Gardiner; Session meeting; Stewardship meeting
June 24 Chat & Chew
June 28 UCW Bake Sale
June 29 Rev. Lynne Gardiner

July

July 3 Zoom Prayer & Share
July 6 Rev. Lynne Gardiner
July 8 Chat & Chew
July 10 Zoom Prayer & Share
July 13 Rev. Lynne Gardiner
July 15 Chat & Chew
July 17 Zoom Prayer & Share
July 20 Rev. Lynne Gardiner
July 22 Chat & Chew
July 24 Zoom Prayer & Share
July 28 Outdoor worship service at Rideau Ferry Yacht Club
Conservation Area
July 29 Chat & Chew
July 31 Zoom Prayer & Share

August

August 3 Rev. Lynne Gardiner
August 5 Chat & Chew
August 7 Zoom Prayer & Share
August 10 Rev. Lynne Gardiner
August 12 Chat & Chew
August 14 Zoom Prayer & Share
August 17 Rev. Lynne Gardiner

August 19 Chat & Chew
 August 21 Zoom Prayer & Share
 August 24 Rev. Lynne Gardiner
 August 26 Chat & Chew
 August 28 Zoom Prayer & Share
 August 31 Rev. Lynne Gardiner away; Lillian McNamee, LLWL, leads worship

September

September 2 UCW meeting, followed by potluck lunch;
 Chat & Chew
 September 4 Zoom Prayer & Share
 September 7 Rev. Lynne Gardiner
 September 9 Chat & Chew
 September 11 Zoom Prayer & Share
 September 14 Rev. Lynne Gardiner; OB meeting
 Aidan Williamson participates in Terry Fox run
 September 15 M & P meeting
 September 16 Chat & Chew
 September 18 Zoom Prayer & Share
 September 21 Rev. Lynne Gardiner
 September 24 Chat & Chew
 September 26 Zoom Prayer & Share
 September 28 Rev. Lynne Gardiner; 130th Anniversary service;
 Debbie Steele guest speaker

October

October 2 Zoom Prayer & Share
 October 5 Rev. Lynne Gardiner; Stewardship campaign begins in support of
 CHIP (Community Housing Initiative Perth)
 October 7 UCW meeting; Chat & Chew
 October 9 Zoom Prayer & Share
 October 12 Rev. Lynne Gardiner; Thanksgiving Sunday
 October 14 Chat & Chew
 October 16 Zoom Prayer & Share
 October 19 Rev. Lynne Gardiner
 October 26 Rev. Lynne Gardiner; Reformation Sunday; soup & sandwich
 October 28 Chat & Chew
 October 30 Zoom Prayer & Share

November

November 2 Rev. Lynne Gardiner; All Saints Sunday
November 4 UCW meeting; Chat & Chew
November 6 Zoom Prayer & Share
November 9 Rev. Lynne Gardiner away; Charlotte Hoy, LLWL, leads worship
November 11 Chat & Chew
November 13 Zoom Prayer & Share
November 16 Hydro One planned power outage; worship cancelled
November 18 Chat & Chew
November 20 Zoom Prayer & Share
November 23 Rev. Lynne Gardiner; Official Board meeting
November 25 Chat & Chew
November 27 Zoom Prayer & Share
November 30 Rev. Lynne Gardiner; Advent 1; white gift Sunday

December

December 1 M & P meeting
December 2 Chat & Chew
December 4 Zoom Prayer & Share
December 7 Rev. Lynne Gardiner; Advent 2
December 9 Chat & Chew
December 11 Zoom Prayer & Share
December 14 Rev. Lynne Gardiner; Advent 3; soup & sandwich lunch;
Christmas sing-along
December 16 Chat & Chew
December 18 Zoom Prayer & Share; Blue Christmas worship
December 21 Rev. Lynne Gardiner; Advent 4
December 24 Rev. Lynne Gardiner; Christmas Eve family worship

